



LightningChart[®] v.8

Release Notes

7th March 2017

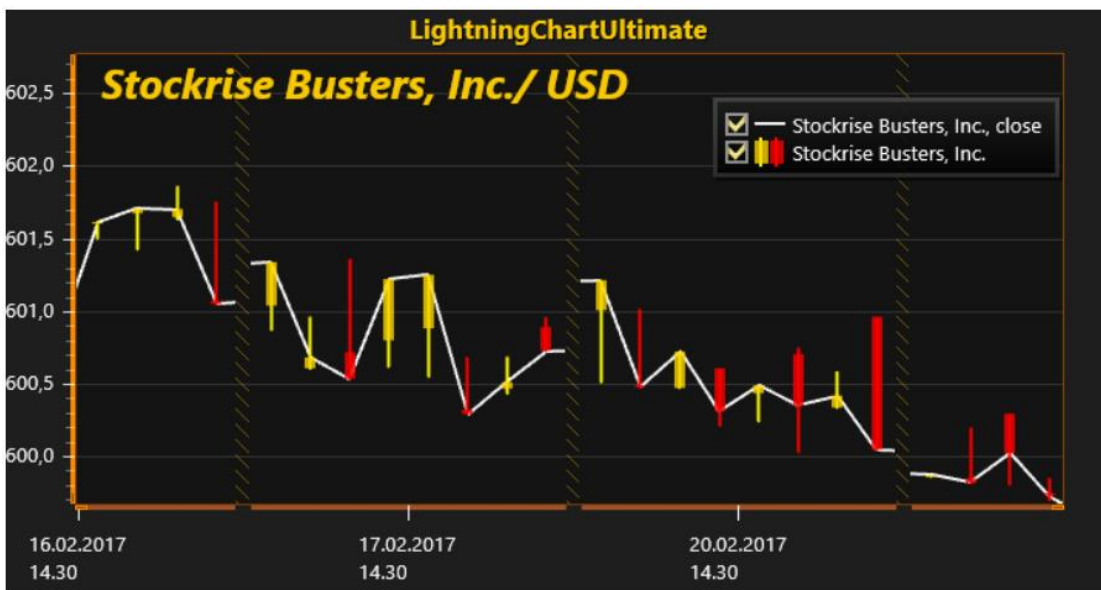
V.8 Release Notes

1. NEW FEATURES.....	3
2. IMPROVEMENTS.....	5
3. ERROR FIXES.....	6
4. BACKWARDS COMPATIBILITY BREAKS.....	6

1. NEW FEATURES

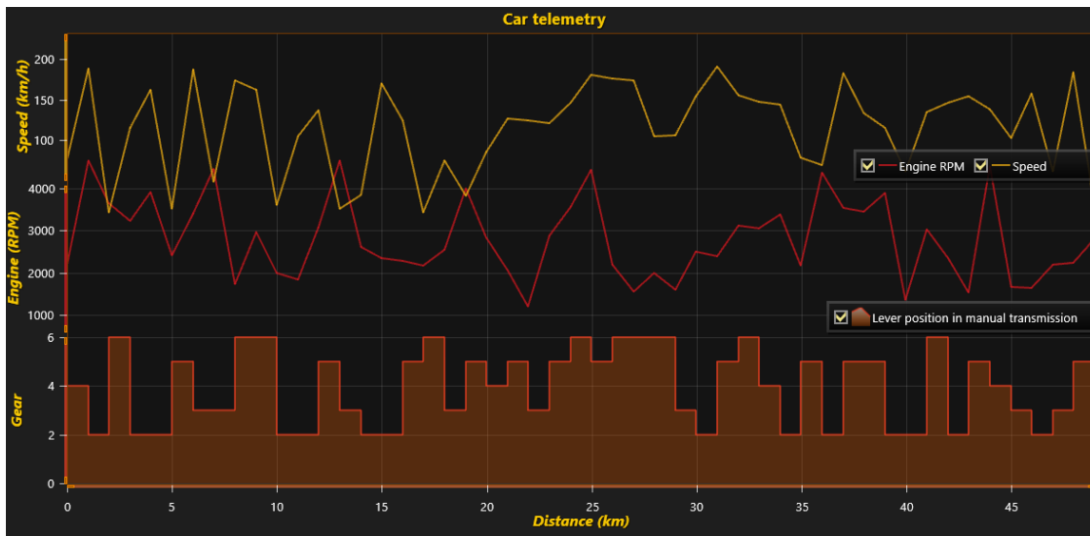
Scale breaks

- X axis has ScaleBreaks collection property
- ScaleBreaks allow excluding specific X ranges, e.g. inactive trading hours/dates or machinery off-production hours



ViewXY's multiple LegendBoxes.

- ViewXY.LegendBoxes collection instead of ViewXY.LegendBox. Place your legend boxes in this collection.
- LegendBoxes are now graph segment-aware.
- LegendBox.Position can be now defined as: TopLeft / TopCenter / TopRight / LeftCenter / RightCenter / BottomRight / Manual / SegmentTopLeft / SegmentTopCenter / SegmentTopRight / SegmentBottomLeft / SegmentBottomCenter / SegmentBottomRight / SegmentLeftMarginCenter / SegmentRightMarginCenter
- LegendBox positioning algorithms renovated
- ViewXY.AutoSpaceLegendBoxes added. When enabling it, adds automatically space for legend boxes in the margins or between segments
- Series have LegendBoxIndex property. With this, it's possible to select which series is to be shown in which legend box. *It's very handy e.g. when displaying Intensity series with ValueRangePalette in different legend box than other series.*

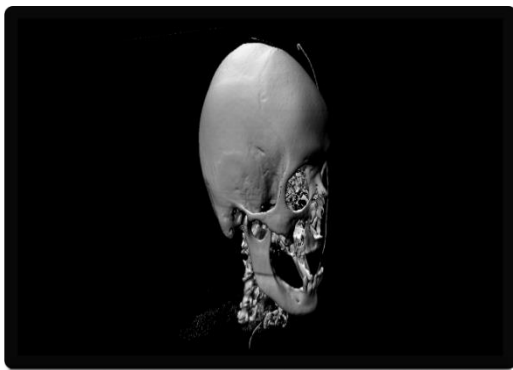


Legend box vertical alignment between segments

When legend box is positioned between segments, `AlignmentInSegmentGap` property can be used to control if the legend box is placed in the center between segments or close to the segment it belongs to.

Volume Rendering

- Volumetric rendering of image sets
- Add volume models in `View3D.VolumeModels` collection. Each collection takes a collection of images as input, *e.g. a set of tomography images, ground samples, fluid and gas dynamics simulation sets. As input, you can use e.g. PNG, JPG, TIF or BMP images.*
- Ray tracing functions: Iso-surface, maximal intensity, accumulation
- Iso-surface supports `View3D` lights
- Lots of properties to configure how the volumetric data is to be interpreted and visualized



New licensing model with ALF license key file support.

- Features can be filtered: ViewXY, Maps, View3D (including ViewPie3D), ViewSmith, ViewPolar, SignalTools, Volume Rendering, and purchased separately or in preset packages.
- Machine-based activation for developers
- Floating developer licenses (needs continuous connection to Arction licensing server)
- Static SetDeploymentKey methods for setting Deployment License Key.
- LicenseKey property and LightningChartUltimate constructor supports LIC licenses only and left as compatibility with older licenses.

Silver Package	Gold Package	Platinum Package
XY	XY	XY
3D	3D	3D
	Polar	Polar
	Smith	Smith
	Maps	Maps
	Signal Tools	Signal Tools
		Volume Rendering

2. IMPROVEMENTS

- Small performance improvements on Smith & Polar view EMF exports when zoomed in.
- Initialization time decreased with certain monitor setups.
- Automatic margins calculation improved in ViewXY, in cases when axes are not automatically positioned.
- ChartError event is produced when LightningChart is forced to recompile some shader. This allows users to detect and solve situations where chart takes long time to initialize due to shader compilation.
- Maximum AntiAlias level for current device is reported with other GPU information.

3. ERROR FIXES

- Stock series mouse interopration fixed when style is 'OptimizedCandleStick'
- Annotations are rendered over axes, not below them.
- MouseOverOn and MouseOverOff events are no longer fired if the objects in question are not visible. This can happen when some other window blocks the view.
- Fixed WinForms LightningChart serialization problems with Visual Studio designer.
- Hovering mouse over SampleData series no longer crashes application.
- Dragging axis nib to screen edge works properly with HighDPI screens.
- Partial prevention of AccessViolationException with Intel HD 4600 at Windows 7 on certain situation with large amount of charts.
- AreaSeries and HighLowSeries fixes
IsMouseOver reacts to points with HighLowSeries.
In Bindable AddValues() method now works as expected.
- ViewSmith and ViewPolar fixes
EMF and SVG exportation work and produce proper output. SVG export is known to miss some features.
- 3D contour line fixes
Lines are no longer shown on clipped area with DirectX 9.
Thick 3D contour lines look better.

4. BACKWARDS COMPATIBILITY BREAKS

- Smith and Polar series (SeriesBaseRound) OwnerView property returns ViewRoundBase, instead of ViewPolarBase. Property is now usable with Smith series, but the return type has changed and might require attention from ViewPolar users.
- LightningChart main solution file has been renamed to LightningChart8.sln. This only affects source code clients.

- ViewXY's X axes ScrollMode is set to 'None' instead of 'Scrolling', by default. Ensure you have set it correctly in real-time monitoring applications.
- ViewXY's X axes ValueType is set to 'Number' instead of 'Time', by default.
- LegendBox.Offset default values changed to (0,0)
- LicenseKey property removed from all components
- Components don't support license key parameter anymore, use e.g. static `LightningChartUltimate.SetDeploymentKey()` instead.

Happy Coding!

If you have any questions, please contact arction@arction.com